

ATE MAX

The revolutionary treatment of structural humidity

The ATE MAX process consists of creating and diffusing structures, using external energy, a low frequency electromagnetic field that responds to the orientation of the dipoles of the water molecules to disrupt them.

These then fall by gravity into the foundations, carrying with them some of the salts causing the efflorescence, and can no longer rise up into the structures.

The walls are then dried by depolarization of the water molecules (between 18 and 24 months depending on the specifics of the building and monitoring of recommendations).

So, the cause of hair loss has been definitively eliminated



Broadcast of a low frequency electromagnetic field



The orientation of the water molecules is determined



The secado de las paredes occurs through the depolarization of the water molecules



mold



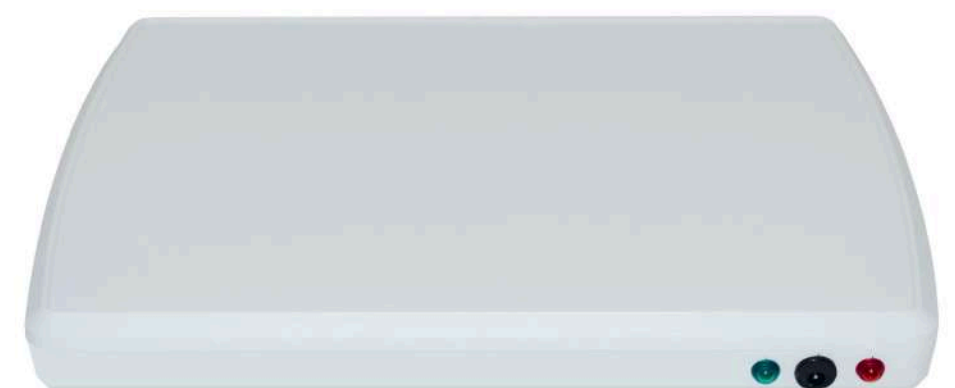
salt pater



tidemark

A radical solution

- **MANUFACTURER'S WARRANTY:** 10 years on the device (except 12V power supply - 2 years). The product is powered by a 12 VDC 1A power adapter.
- **GUARANTEE OF EFFICIENCY:** less than 10 years of experience in electromagnetic treatments.



+ Easy to use

+ Economic

+ Walls and floors

10 REASONS TO CHOOSE ATE MAX

- 1 The most economical technique
- 2 Installation is fine, without deterioration of the structures
- 3 Low power, no harm to health (certified product)
- 4 Mayor eficacia thanks to a continued broadcast
- 5 Treat the totality of the buildings: walls, floors and floors
- 6 Address the cause of the problem and the effects
- 7 Suitable for buildings of any size
- 8 Reduction of heating costs
- 9 10 years of experience in electromagnetic treatments
- 10 French manufacturing

STANDARDS AND CERTIFICATIONS

- Directive 2014/35/EU (low voltage)
- Directive 2014/30/EU (EMC)
- No harmful electromagnetic waves (EMF)
- Directive 2011/65/EU (RoHS)
- Directive 2012/19/EU (RAEE)
- Equipped manufactured in accordance with ISO 9001 standards

The ATE MAX (Electromagnetic Polarity Inverter or Electric Electronic Technology) has a radio of up to 30 meters for a total diameter of 60 meters, this electromagnetic polarity inverter eliminates moisture problems on the walls and specifically capillaries. ascending.

Our new ATE MAX device is quick to install.
It is suitable for all ancient lives.

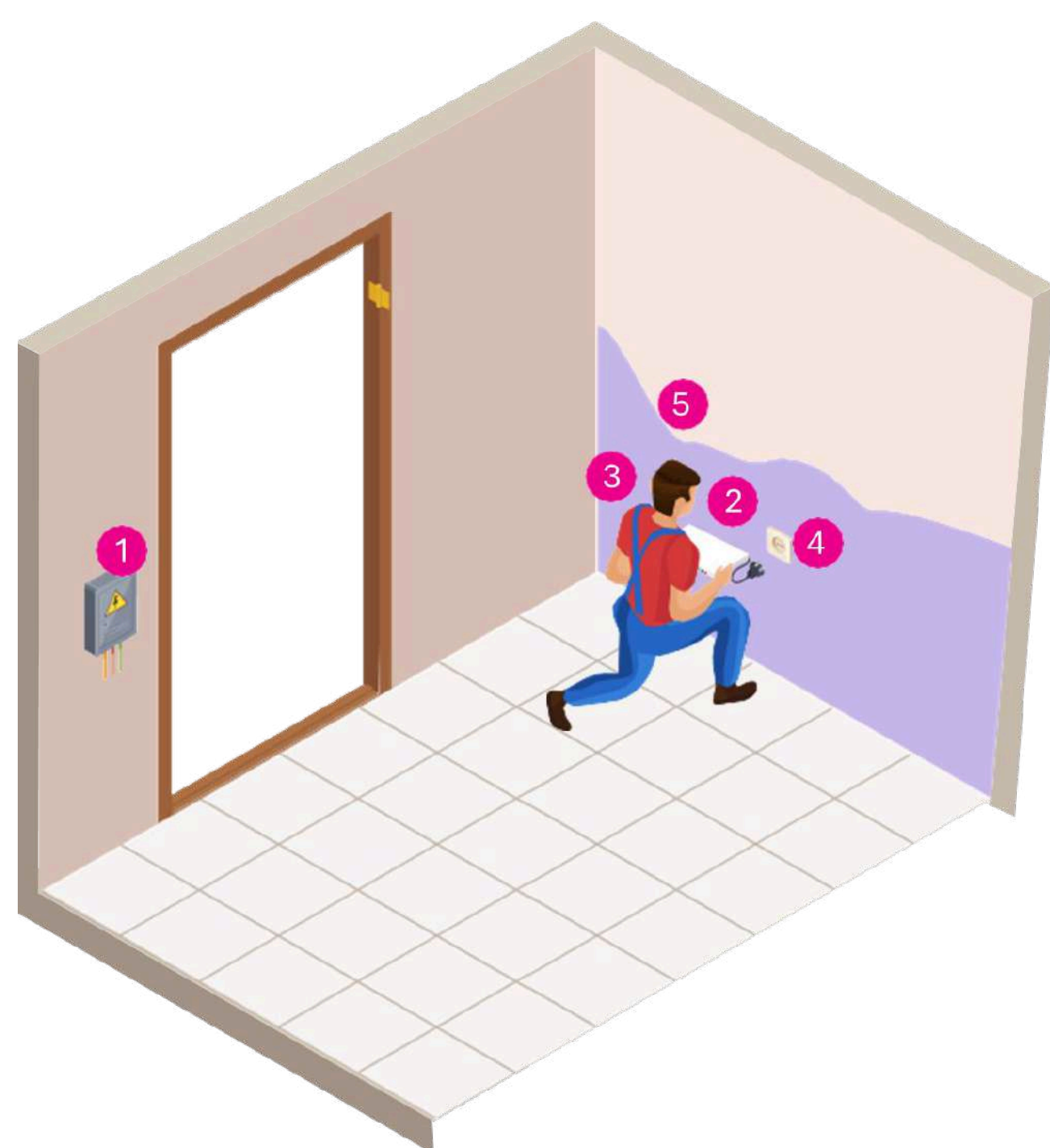
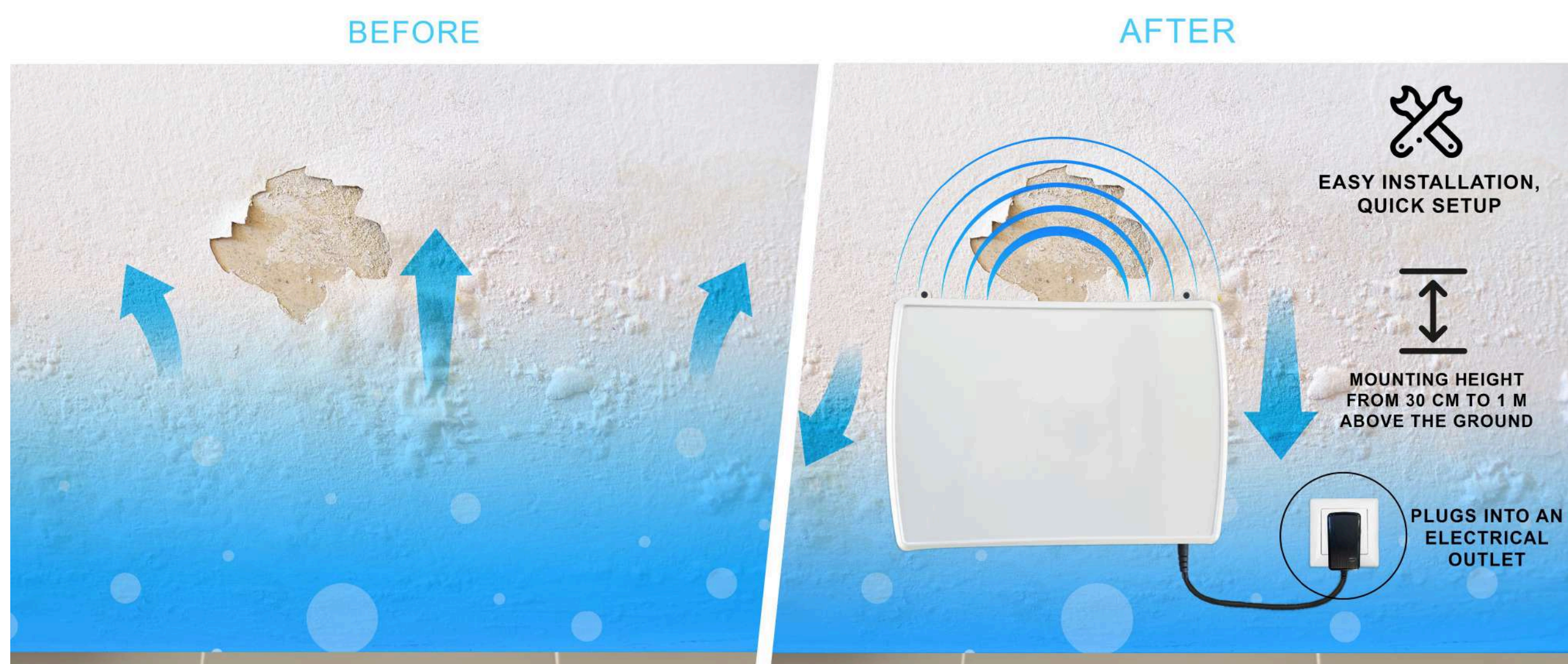
The ATE MAX is manufactured in France (Castres 81).

Weighing 2.2 kg, the ATE MAX model measures 322x232x32.

Instructions for installation and use ATE MAX

How to choose your device?

Please select a device with a radio that has sufficient power to cover the entire area to be processed.



Installation in 5 settings:

- 1 The device must be placed at a minimum distance of 1.50 meters from any electrical or electronic device.
- 2 Mounting height from 30 cm to 1 meter respecting the level of the floor.
- 3 The device does not have to be a movie.
- 4 The device must be powered continuously from the electrical sector.
- 5 The device must be installed directly on a structural wall. It won't work in a yeso coating.

Method of employment:

- The equipment will be supplied with a separate power source.
- The green LED indicator turns on, indicating that the system is operating against the humidity that is on your walls.
- The red LED indicates that the device is on fire.
- It is recommended to check that the red and green LEDs are permanently on. If not, please contact the device provider.

Technical specifications and recommendations

1)REMOVAL OF WALL COATINGS OR FILMOGENIC COATINGS

-It is recommended to remove the lower part of the walls during the drying period to a height of approximately 10 cm to allow for ventilation and to enable the walls to breathe.

2)HOUSE VENTILATION

-Good air circulation is necessary as dryness is partly achieved through evaporation. Therefore, ventilation is essential.

-Install adequate ventilation in your home.

-Ensure that doors and windows meet standards (doors must have a minimum gap of 1.5 cm in dry areas and 2 cm in humid areas).

-Consider installing fans in windows.

3)RESTORATION OF PLASTER AND PAINT

-When the walls are dry, any damp areas must be moistened before surfaces are treated, and it is essential to carry out a cleaning process to remove the majority of contaminants. If the second layer of the wall is intact, it does not necessarily need to be dried or sealed; however, it is also important to avoid contaminated minerals that may affect coatings.

-It is recommended to apply floor coverings with a lime coating containing additives to resist microbial contamination.

4)INSTALLATION OF A DRAIN

-It is recommended to install drainage in case of lateral infiltrations. The drain serves to recharge underground water and evacuate it before it reaches higher levels.

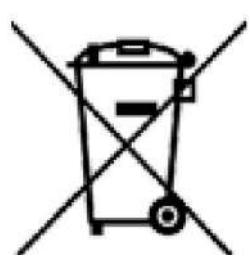
The speed of drying of the walls is influenced by various factors such as size, composition and coating. It is also crucial to carefully follow our recommendations to ensure an optimal result. It is important to note that this device is not intended to resolve water infiltration, flooding or water problems at your home; These problems must be dealt with independently.

The product is intended exclusively for interior use. The device must not be exposed to water or salt. You must not drain any liquid on the device. The device must be used as described in the manual. Do not use the device for fine warning lights. The temperature of use is from 0°C to 40°C.

Do not use the product if the electronic components or the plastic casing are damaged. If this is the last time you present astillas or grietas, you will have to replace them. If the product is damaged, it must be repaired by the manufacturer, the service provided or by a qualified person to avoid any damage.

The use, cleaning and maintenance of the device by children or people with reduced physical, sensory or mental abilities, or lack of experience or skills, must only be carried out after receiving the appropriate instructions and without adequate supervision from a responsible adult. This precaution is intended to guarantee safe handling and avoid any risk of damage. This device should keep children and animals safe.

TREATMENT OF ELECTRIC AND ELECTRICAL EQUIPMENT FOR THE FINAL DEAL OF YOUR LIFE USEFUL, APPLICATION IN THE COUNTRIES OF THE UNIÓN EUROPEA AND OTHER COUNTRIES OF EUROPEOS WITH SELECTIVE RECOGNITION SYSTEMS.



This symbol, located in the product or in its packaging, indicates that this product should not be processed with household waste. It must be stored in a suitable collection point for the recycling of electrical and electronic equipment. By ensuring that this product is dried properly, you will need to prevent possible negative consequences for the environment and human health. The recycling of materials will help to preserve natural resources. To obtain more information on the recycling of this product, you can contact your municipality, your recycling center or your distributor. The used batteries must be discarded for safe handling. Deposited in collection containers designated for this proposal.